



**Certified Pre-Owned**  
Digital Workflow Dental Solutions



# Get Digital At A Reduced Price

with an iTero Element Flex™ Foundation  
Certified Pre-Owned Scanner<sup>1</sup>

\* Laptop not included.

[Click for laptop compatibility information](#)

## Product Features

- **Ultimate mobility:**
  - Taking patient care anywhere
- **Vibrant color scanning and visualization:**
  - Quicker clinical evaluations for you, and more impressive chairside consultations for your patients
- **Efficient Connectivity:**
  - Easily send restorative scans in STL format to your lab within minutes<sup>†</sup>



**iTero**

## Certified Pre-Owned Scanner

- No recurring costs and warranty included for 1 or 3 years<sup>2</sup>
- Dedicated support and integration
- Unlimited scans and cloud-based storage
- Fast spare part shipments
- 100% replacement of defective parts at no additional cost
- Latest software releases

<sup>†</sup> Based on 10,000 scans, mean transfer time, defined as the time between the practice sending the iTero scan and the dental laboratory receiving it, is 4.6min. May vary based on internet connection. Data on file at Align Technology, as of February 12, 2020.

Contact your local ZimVie Rep:

SKU	CPO Model	Term
212074-12	iTero Element Flex <sup>®</sup>	12 month
212074	Foundation	3 year

**ZimVie**

# Streamline your restorative workflow with the iTero Element™ Intraoral Scanner



**Certified Pre-Owned**  
Digital Workflow Dental Solutions

## Work more efficiently with your lab



1

### Scan Your Patient

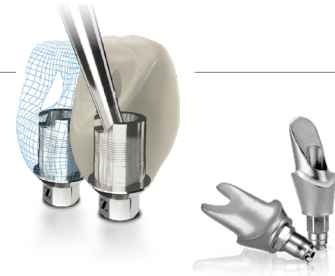
Scan the Encode healing abutment



2

### Send Scans to Partners

Forward data file to preferred lab or ZimVie



3

### Begin Restorative Treatment

Restore with ZimVie Tibase or CAD/CAM abutment\*

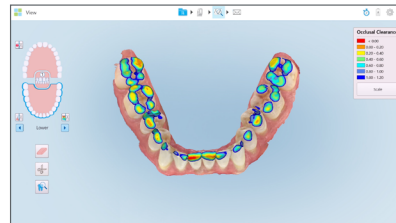
## Enhance your diagnosis and treatment planning capabilities with the iTero™ Foundation software package

- Powerful tools such as the iTero™ TimeLapse technology and Occlusogram make your patients' oral health and treatment progress easy
- Open platform allows seamless digitalization of your routine and interoperability of other digital workflows (chairside implant planning, CSM, etc.)
- Benefit from fast<sup>3</sup> scan, reliable accuracy,<sup>4</sup> and enhanced lab connectivity
- Easy to learn and use scanning protocol for greater efficiency
- Get answers to any questions with direct access to a team of training and support experts



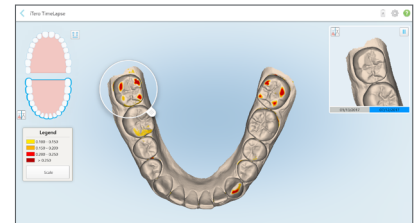
### Implant Connectivity Workflow

Scan the scan body of your choice and send the iTero™ scan automatically to your laboratory.



### Occlusogram

Highlight contact relationship between arches with clear, color-coded images.



### iTero TimeLapse Technology

Show patients' gradual changes in tooth wear, tooth movement and gingiva over time using engaging chairside visuals.

\* Warranties available on OEM restorations. <sup>1</sup> Certified Pre-Owned (CPO) scanners are original equipment manufacturer certified refurbished units and are not available for sale in Canada or U.S. territories. They may not be offered in all regions and are subject to availability. CPO units have Restorative Foundation software and do not include Invisalign® workflow connectivity. <sup>2</sup> Following initial three-year service plan, additional charges will apply for remote support connection and repairs for customers not on a service plan. Additional charges may apply for software upgrades and cloud storage for customers not on a service plan. There is no commitment to move to a service plan after 3 years, but customers have an option to purchase a service plan after initial term. <sup>3</sup> Patient scans can be completed in as little as 60 seconds with the same accuracy and reliability that you have come to expect from iTero Element scanners. Actual scan times depend on individual experience. <sup>4</sup> Accuracy defined as a combination of trueness and precision tested on different substrates, under different lighting conditions, for crown preparation and full-arch scanning. Based on the results of 12 peer-reviewed papers 2018-2020. Data on file at Align Technology, as of November 20, 2020.

For more information visit [ZimVie.com](https://www.zimvie.com)

### ZimVie

4555 Riverside Drive  
Palm Beach Gardens, FL 33410  
Phone: +1-561-776-6700  
Fax: +1-561-776-1272

 **ZimVie**  
Restoring Daily Life.®

Unless otherwise indicated, as referenced herein, all trademarks and intellectual property rights are the property of ZimVie Inc. or an affiliate; and all products are manufactured by one or more of the dental subsidiaries of ZimVie Inc. (Biomet 3i, LLC, Zimmer Dental, Inc., etc.) and marketed and distributed by ZimVie Dental and its authorized marketing partners. ZimVie is an authorized distributor of iTero Products which are manufactured by Align Technology, Inc. For additional product information, please refer to the individual product labeling or instructions for use. Product clearance and availability may be limited to certain countries/regions. This material is intended for clinicians only and does not comprise medical advice or recommendations. Distribution to any other recipient is prohibited. This material may not be copied or reprinted without the express written consent of ZimVie. ZV0793 REV A 02/23. ©2023 ZimVie, Inc. All rights reserved.

