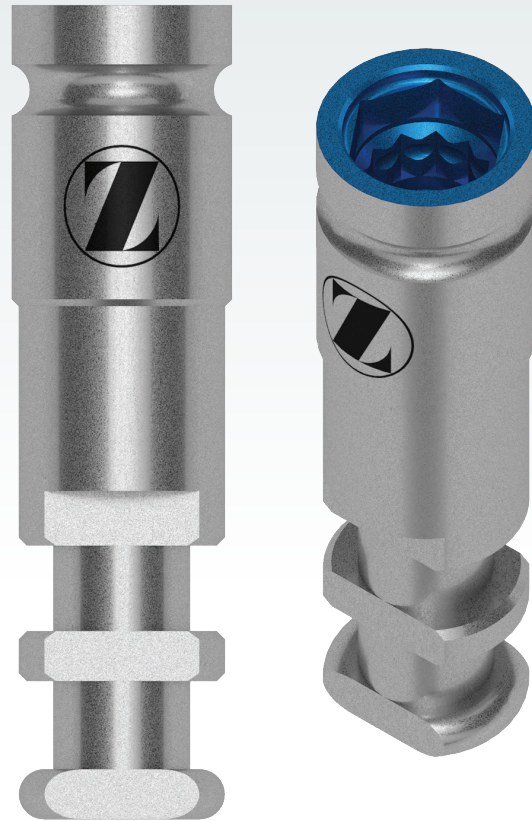




# Digital Analogs for Certain® and External Hex Connections



## World Class Flexibility

The New Digital Analog Offers a Unique One-Stop Solution for Your Various Digital Workflow Needs

1

### Unparalleled Precision

The Certain and External Hex Digital Analogs are designed and manufactured to exact tolerances and specifications in order to accurately replicate implant placement in a 3D printed model and stone model.

2

### Dual Functioning Design

Our re-designed Digital Analogs can now be used in both a stone model or a 3D printed model workflow for cases using Certain and External Hex Implants.

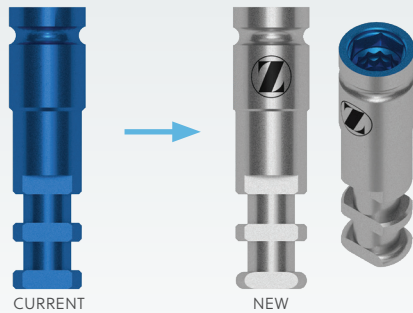
Note: Now Available in a Carbon printed 3D model



# DIGITAL ANALOGS FOR CERTAIN AND EXTERNAL HEX CONNECTIONS

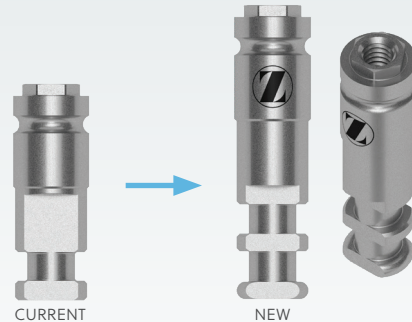
## New Design

The new design incorporates the ZimVie Logo for easy identification of an OEM (Original Equipment Manufacture) product.



### Certain Connection

The Certain Analog internal connection is color-coded by size for easy identification in the lab and the model.



### External Hex Connection

Additional step in the apical design of the analog indicates the newer design that can be used in a 3D printed model.

## Same Part Numbers

No changes to part numbers, same products you have been ordering for years but now with greater functionality.

### Certain Internal Connection Digital Analogs

	Seating Surface	Item No.
	3.4 MM(D)	IMMILA
	4.1 MM(D)	IILA20
	5.0 MM(D)	IILAW5
	6.0 MM(D)	IILAW6

### External Hex Connection Digital Analogs

	Seating Surface	Item No.
	3.4 MM(D)	MMILA
	4.1 MM (D)	ILA20
	5.0 MM(D)	ILAW5
	6.0 MM(D)	ILAW6

For more information, visit [ZimVie.com](http://ZimVie.com)

**ZimVie**  
4555 Riverside Drive  
Palm Beach Gardens, FL 33410  
1-800-342-5454  
Phone: +1-561-776-6700  
Fax: +1-561-776-1272

 **ZimVie**  
Restoring Daily Life.™

Unless otherwise indicated, as referenced herein, all trademarks and intellectual property rights are the property of ZimVie Inc. or an affiliate; and all products are manufactured by one or more of the dental subsidiaries of ZimVie Inc. (Biomet 3i, LLC, Zimmer Dental, Inc., etc.) and marketed and distributed by ZimVie Dental and its authorized marketing partners. For additional product information, please refer to the individual product labeling or instructions for use. Product clearance and availability may be limited to certain countries/regions. This material is intended for clinicians only and does not comprise medical advice or recommendations. Distribution to any other recipient is prohibited. This material may not be copied or reprinted without the express written consent of ZimVie, Inc. ZV1903 REV A 11/23 ©2023 ZimVie, Inc. All rights reserved.

