



Your Connection for  
Every Connection



# All on X Screws

Prosthetic Solutions for  
Superstructures

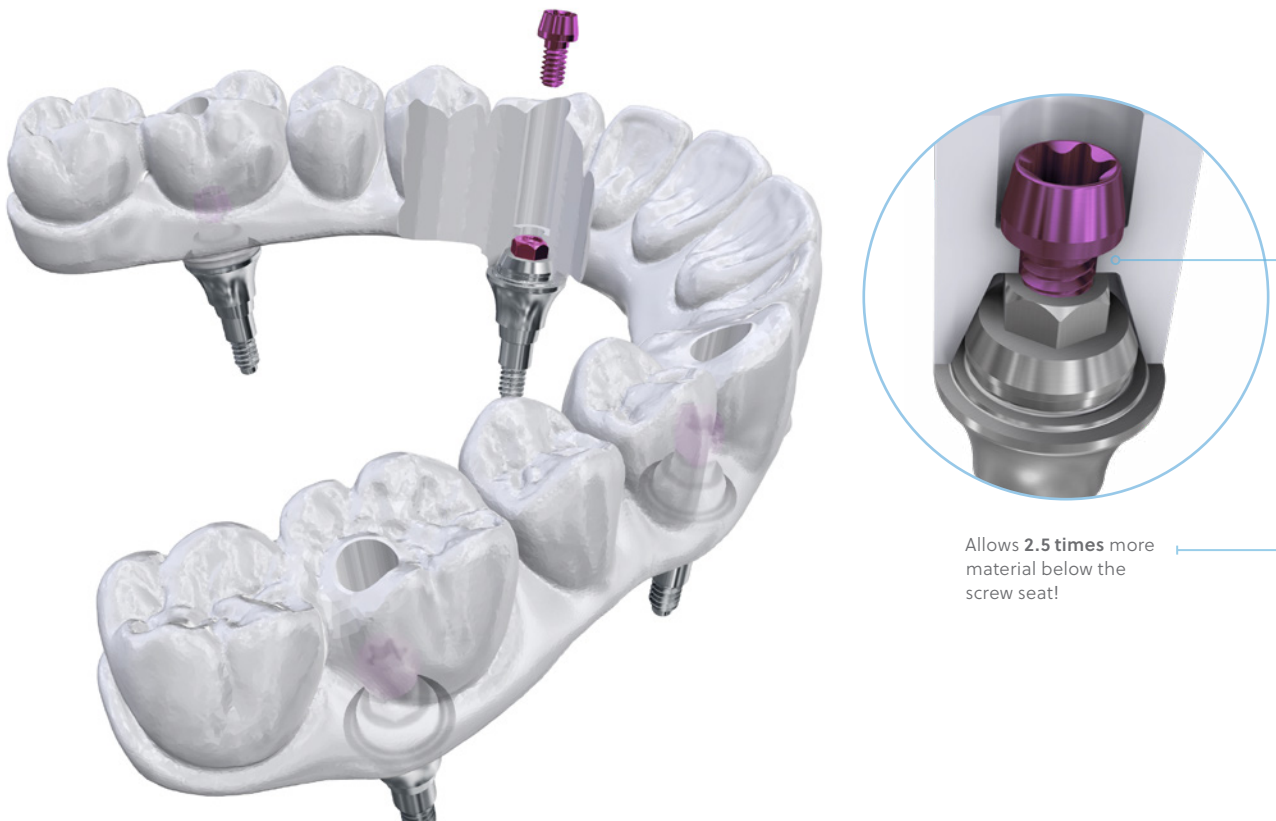




# All on X Screws

## Definitive connections for superstructures

- **Higher pre-load** between the structure and the multi-unit abutment providing less screw loosening
- **Flat seat design** allows better control of the screw positioning when tightened
- **Works with any material** – Temporary, metal or zirconia prostheses





## Flat Seat Design

**Optimized for superstructures** to distribute forces evenly around the seating surface

**Increased seat thickness** allows more resistance for a more stable and durable restoration.

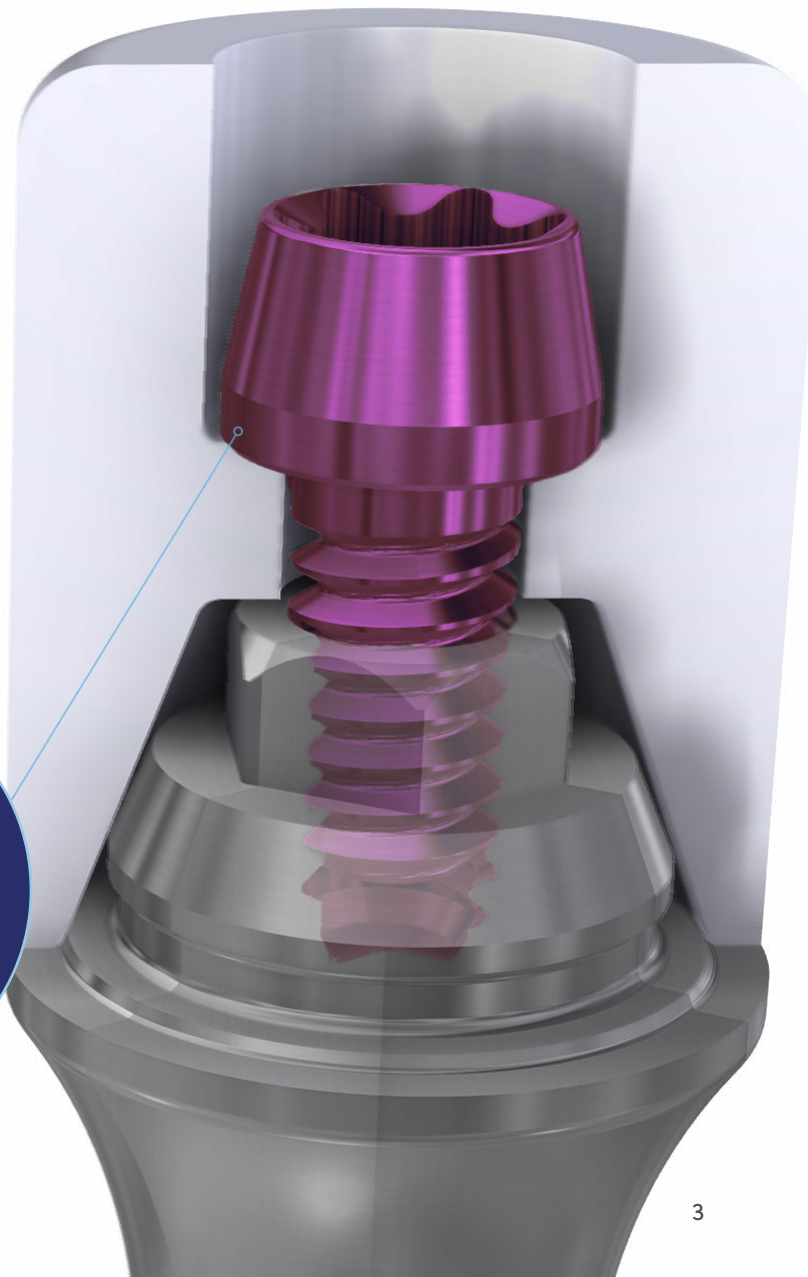
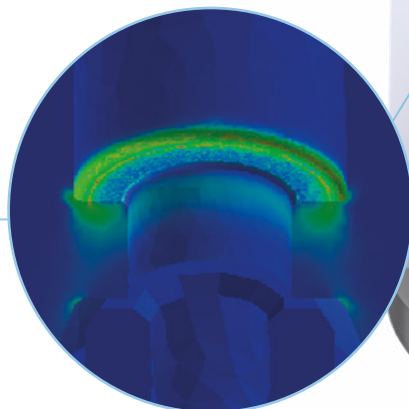
- Less susceptible to breakage
- Ideal for softer materials such as temporary prosthesis

**Self centers** the screw towards the axis of the multi-unit abutment

**Torx ball screw** allows angulating the screw channel up to 25° with 360° rotation

**Color Anodized** for easier identification

**All on X Seat**  
Torque value of 20 Ncm  
creates a preload of 326 N



## All-on-X Full Arch Screws

4.8 mm (P)  
RP

System	Material	Quantity	Part Number	Compatible with
Uni Grip	Ti	Qty. 10	ARMU-SOXUGX10	Nobel Brånemark®, NobelReplace® Select, NobelActive™ and NobelReplace®
Hex 1.20 mm	Ti	Qty. 10	ARMU-SOXHX120X10	ZimVie External Hex, Neodent® CM, Megagen AnyRidge®
Hex 1.22 mm	Ti	Qty. 10	ARMU-SOXHX122X10	Dentsply Friadent Xive®, Osstem® TS, GlobalD®, BTi®, Biotech Kontakt®, ZimVie Certain®
Hex 1.27 mm	Ti	Qty. 10	ARMU-SOXHX127X10	Astra Tech™, Osseospeed™, ZimVie TSV & Mis® Seven/C1 & V3, BioHorizons®, AstraTech Implant System EV™, Camlog®, Bego Semados®
Torx Ball	Ti	Qty. 10	ARMU-SOXTRXX10	ASC, Neodent® GM



## Tools

Driver Tips	18 mm (L)	20 mm (L)	24 mm (L)	30 mm (L)	35 mm (L)	Compatible with
1.20 mm hex	ARA-DTC18H120	ARA-DT2H20	ARA-DTC24H120	ARA-DTC30H120	ARA-DTC35H120	ZimVie External Hex, Neodent® CM, Megagen AnyRidge®
1.22 mm hex	-	ARA-DT2H22	ARA-DTC24H122	-	ARA-DTC35H122	Dentsply Friadent Xive®, Osstem® TS, GlobalD®, BTi®, Biotech Kontakt®, ZimVie Certain®
1.27 mm hex	-	ARA-DTC20H127	ARA-DTC24H127	ARA-DTC30H127	ARA-DTC35H127	Astra Tech™, Osseospeed™, ZimVie TSV & Mis® Seven/C1 & V3, BioHorizons®, AstraTech Implant System EV™, Camlog®, Bego Semados®



Driver Tips	20 mm (L)	24 mm (L)	30 mm (L)	35 mm (L)	Compatible with
Torx Ball	ARA-DT20TB06	ARA-DT24TB06	ARA-DT30TB06	ARA-DT35TB06	ASC, Neodent® GM
Unigrip	ARA-DT20U	ARA-DT24U	ARA-DT30U	ARA-DT35U	Nobel Brånemark®, NobelReplace® Select, NobelActive™ and NobelReplace®



Plan your next case with All on X Screws.  
Buy now at [ZimVie.com](http://ZimVie.com)

For more information, visit [ZimVie.com](http://ZimVie.com)

ZimVie US Corp LLC  
4555 Riverside Drive  
Palm Beach Gardens, FL 33410  
Phone: +1-561-776-6700  
Fax: +1-561-776-1272  
[dentalcs@ZimVie.com](mailto:dentalcs@ZimVie.com)



Unless otherwise indicated, as referenced herein, all trademarks and intellectual property rights are the property of ZimVie Inc. and its affiliates; and all products are manufactured by one or more of the dental subsidiaries of ZimVie US Corp LLC (Biomet 3i, LLC, etc.) and distributed by ZimVie US Corp LLC and its authorized marketing partners. All on X Screws are manufactured by Terrats Medical S.L. For additional product information, please refer to the individual product labeling or instructions for use. Product clearance and availability may be limited to certain countries/regions. This material is intended for clinicians only and does not comprise medical advice or recommendations. Distribution to any other recipient is prohibited. This material may not be copied or reprinted without the express written consent of ZimVie and is not for distribution in France.  
ZV3245-NAM REV B 03/26 ©2026 ZimVie. All rights reserved.

