



Lab
Manual

The TSV[®] BellaTek[®] Encode[®] Impression System

Laboratory Manual for Encode
Empowered Laboratories



 **ZimVie**

ZimVie DENTAL SOLUTIONS

Traditional and Stone Model Impressions

Traditional Impression

Inspect the case for an accurate impression of the TSV BellaTek Encode Healing abutment. Impressions of the TSV BellaTek Encode Healing Abutment codes must be clearly visible. The total circumference should be 1 – 2 mm above the soft tissue (1 mm minimum); codes should be visible with no rips, tears, bubbles, or distortion.

Stone Model

Use low expansion die stone, for proper scanning, the case must provide the following:

1. Visibility of the Encode Healing Abutment showing 1 – 2 mm of the collar
2. A defect free occlusal surface and clear view of the surrounding tissue
3. No voids or bubbles in the stone

Weigh and measure die stone and water per the manufacturer's instructions. Allow the stone to fully set. Do not flip or mount casts prematurely.

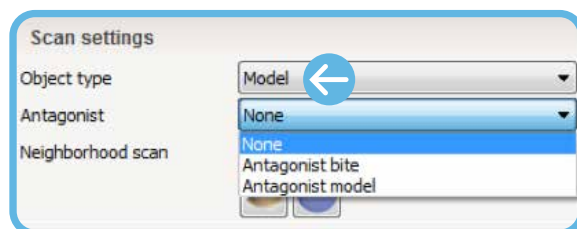
Mount the casts on an articulator compatible with Adesso Split Mounting plates using the bite registration.

Casts must be centered on mounting plates; the scanner reads where the plates are located. If the cast is off the plate, the case will not be scanned correctly.

Customized Abutment Order Creation in 3Shape

IMPORTANT: Prior to creating an order and designing the final abutment in 3Shape, look at the stone model to determine the implant type; TSV Implant connection is indicated by three (3) grooves on the occlusal portion of the screw.

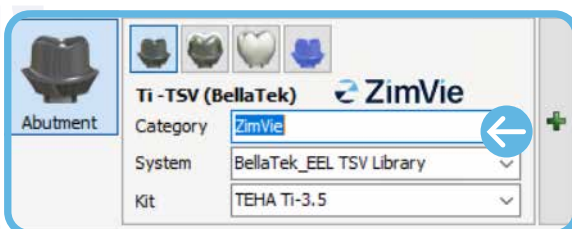
1. In the 'Scan settings' section of the menu, for 'Object type' select "Model". If antagonist is available, under 'Antagonist', select applicable options



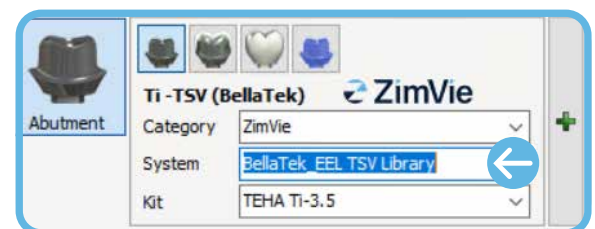
2. Select the "Abutment" icon in the menu (customized abutment is selected by default)

3. Abutment Order Settings

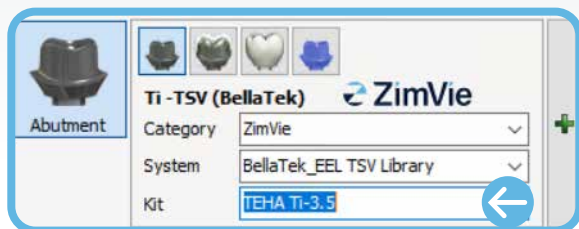
- a. For 'Category', select "ZimVie TSV"



- b. For 'System', select "ZimVie TSV EHA"



- c. For 'Kit', select the correct Encode Healing Abutment catalog code based on the code scheme. If necessary, measure the Emergence Profile to the correct diameter.

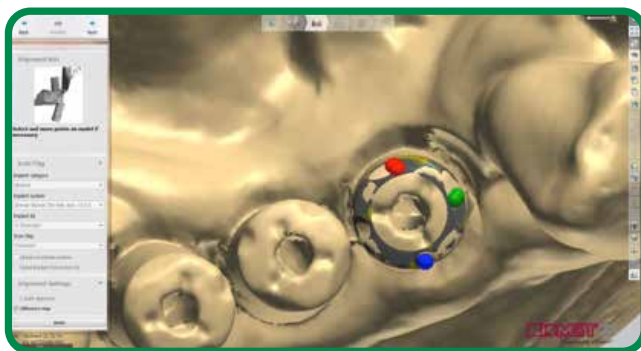


4. For cases requiring a 3D-printed model, click on 'model' icon in the menu Select 'Scan' to begin scanning

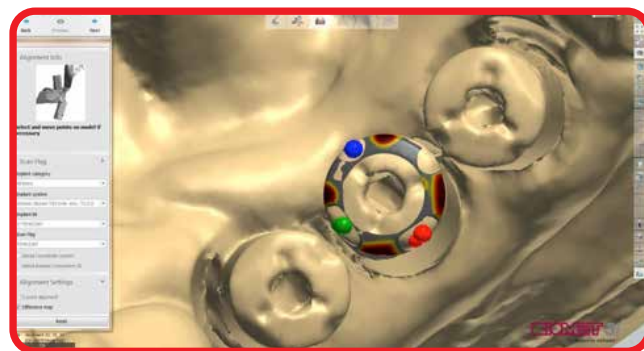
Customized Abutment Scanning

1. Insert the stone model with Encode Healing Abutment into the 3Shape scanner and scan
2. Scan antagonist/bite registration, if available
3. Start the overview scan
4. Start detailed area scan
5. Start the alignment process
 - a. To align an abutment click on "Alignment Setting"
 - b. Select box for "Three point alignment"
 - c. In the scanned EHA, select three (3) dots/positions on the codes
 - d. In the virtual mode, select and position three (3) dots in the same location as in the step above
 - e. The result of the alignment is displayed on the screen
6. Select "Difference map" or "2D Cross" to confirm accuracy of alignment:

Example of Difference Map - Successful Alignment:

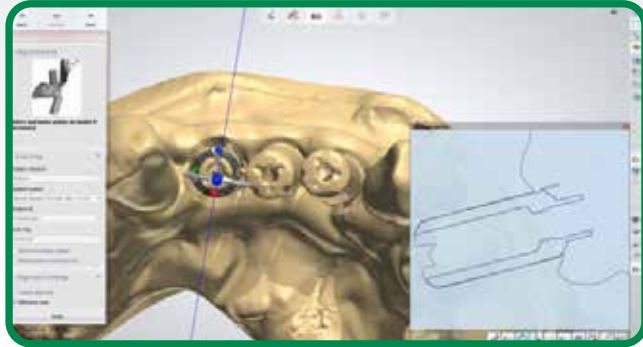


Example of Difference Map - Unsuccessful Alignment:

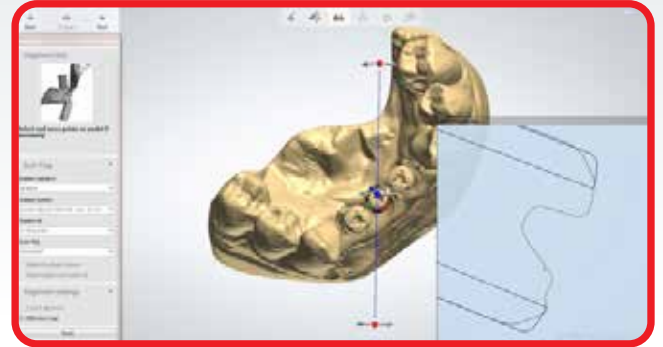


Traditional and Stone Model Impressions

Example of 2D Cross - Successful Alignment:



Example of 2D Cross - Unsuccessful Alignment:

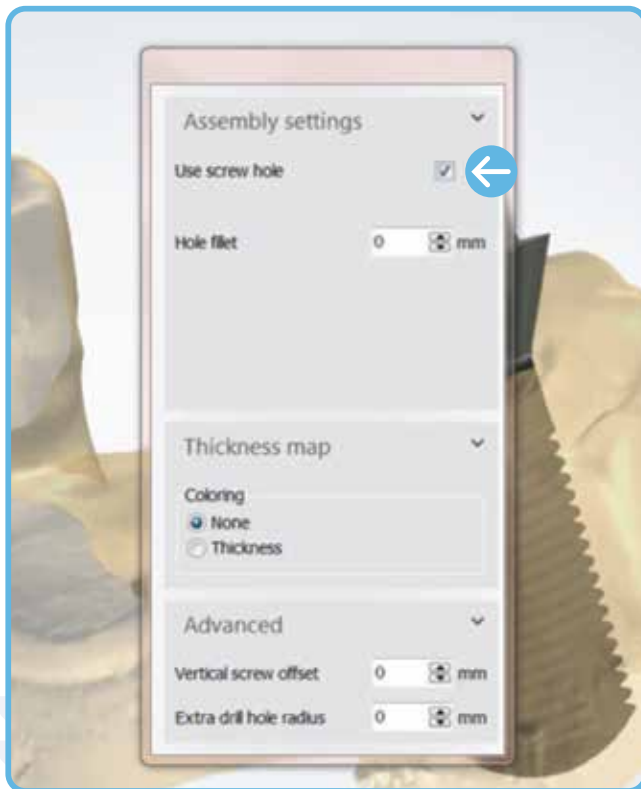


7. Complete the scanning

Abutment Design

1. Proceed with standard abutment design

NOTE: If a Zirconia abutment is being designed, "Use screw hole" must be selected at all times.



2. Click "Next"

Submit Case Through Dental Manager

1. Send to manufacturer from your outbox to ZimVie Dental inbox

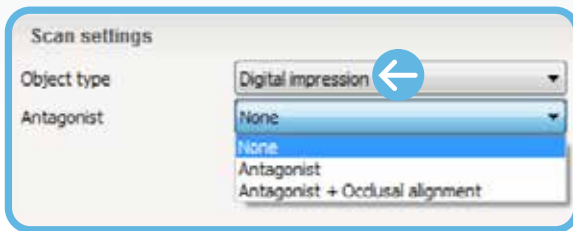
NOTE: For cases requiring a model, please refer to 3Shape Modelbuilder instructions. The 'Analog to Model Spacing' value defaults to "0.020 mm". If a tighter or looser fit of the model analog is required, then adjust the 'Analog to Model Spacing' value. The 'Protect Analog' option defaults to "True". The 'Protect Analog Distance' value defaults to "1.000 mm" and can be adjusted as desired.

Intra-Oral Scanner Impression (Non-TRIOS)

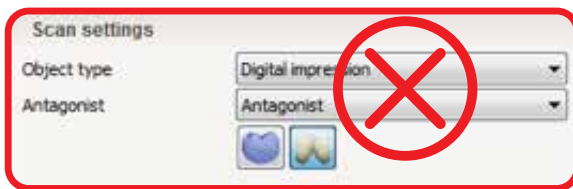
Customized Abutment Order Creation in 3Shape

IMPORTANT: Prior to creating an order and designing the final abutment in 3Shape, look at the .STL file to determine the implant type; TSV Implant connection is indicated by three (3) grooves on the occlusal portion of the screw.

- In the 'Scan settings' section of the menu, for 'Object type' select "Digital impression". If antagonist is available, under 'Antagonist', select applicable options



NOTE: "gingival scan" option is selected by default; this option should always be unselected when doing an IOS Impression case.



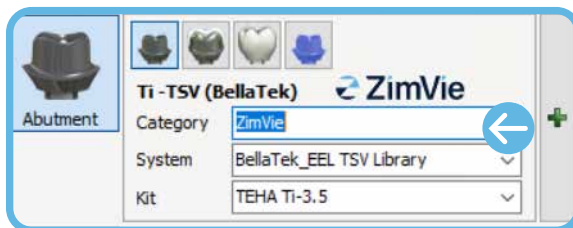
Incorrect



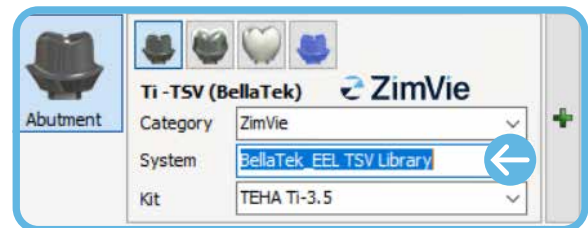
Correct

- Select the "Abutment" icon in the menu ("Customized abutment" is selected by default)
- Abutment Order Settings

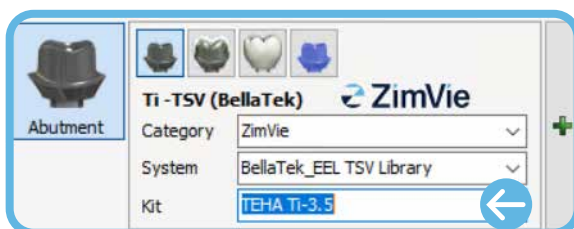
- For 'Category', select "ZimVie TSV"



- For 'System', select "ZimVie TSV EHA"



- For 'Kit', select the correct Encode Healing Abutment catalog code based on the code scheme. If necessary, measure the Emergence Profile to the correct diameter.



- For cases requiring a 3D-printed model, click on "Model" icon in menu

Intra-Oral Scanner Impression (Non-TRIOS)

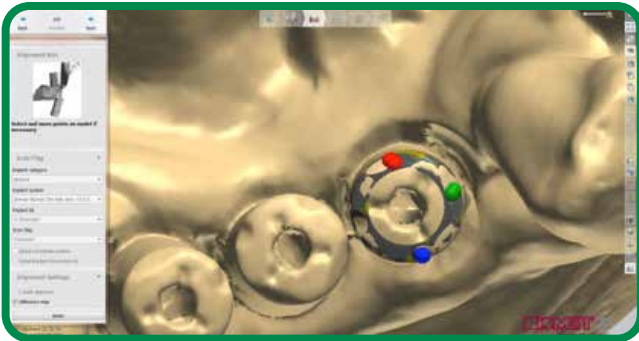
Importing Intra-Oral Scan

1. After order is created, in the 'Orders' section, right click on the order that has been created and select "Import scan" to load the .STL file.
Order will appear with yellow exclamation point "!"

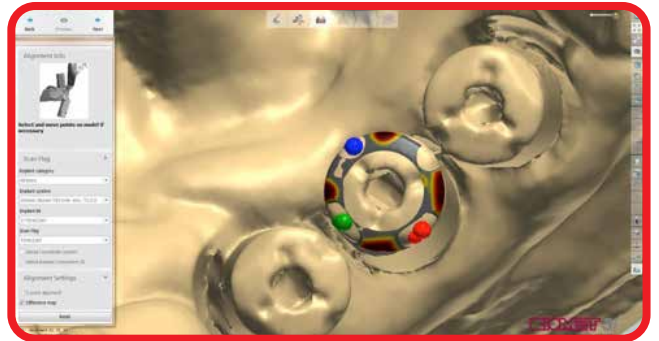


2. Right click order and select "Next" to begin alignment process
3. Start the alignment process
 - a. To align an abutment click on "Alignment setting"
 - b. Select box for "Three point alignment"
 - c. In the scanned EHA, select three (3) dots/positions on the codes
 - d. In the virtual mode, select and position three (3) dots in the same location as in the step above
 - e. The result of the alignment is displayed on the screen
4. Select "Difference map" or "2D Cross" to confirm accuracy of alignment:

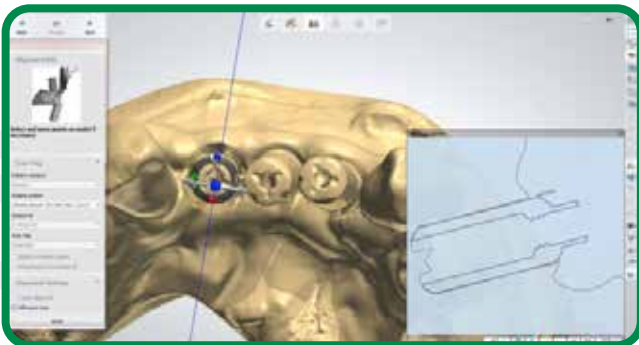
Example of Difference Map - Successful Alignment:



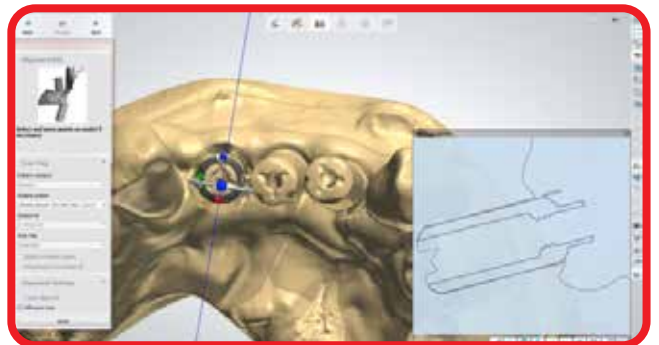
Example of Difference Map - Unsuccessful Alignment:



Example of 2D Cross - Successful Alignment:



Example of 2D Cross - Unsuccessful Alignment:

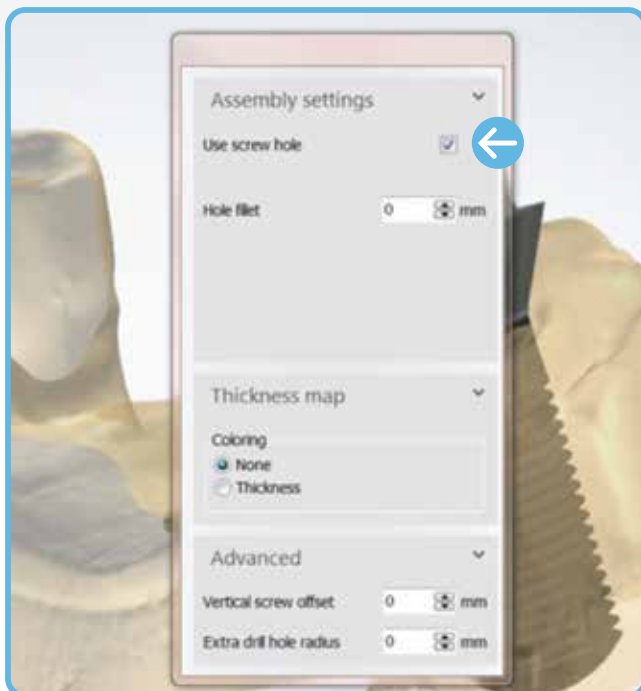


5. Complete the creation of the order

Abutment Design

1. Proceed with standard abutment design

NOTE: If a Zirconia abutment is being designed, "Use screw hole" must be selected at all times.



NOTE: For cases requiring a model, please refer to 3Shape Modelbuilder instructions.

The 'Analog to Model Spacing' value defaults to "0.020 mm". If a tighter or looser fit of the model analog is required, then adjust the 'Analog to Model Spacing' value. The 'Protect Analog' option defaults to "True". The 'Protect Analog Distance' value defaults to "1.000 mm" and can be adjusted as desired.

2. Click "Next"

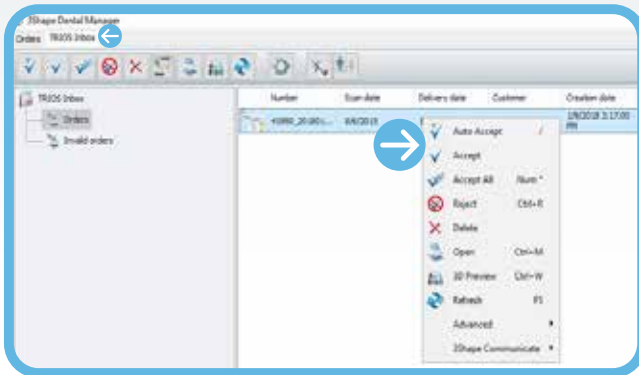
Submit Case Through Dental Manager

1. Send to manufacturer from your outbox to ZimVie Dental inbox

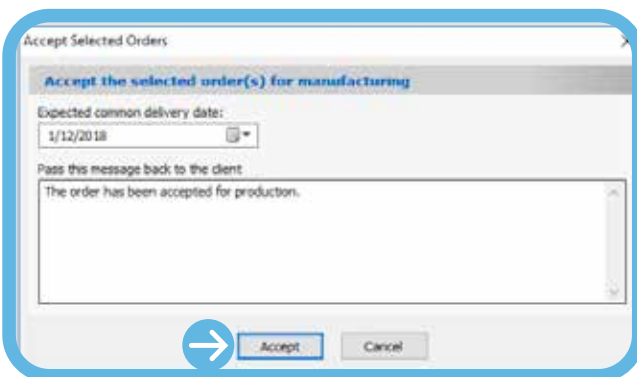
Intra-Oral Scanner Impression (TRIOS®)

Importing TRIOS Scan*

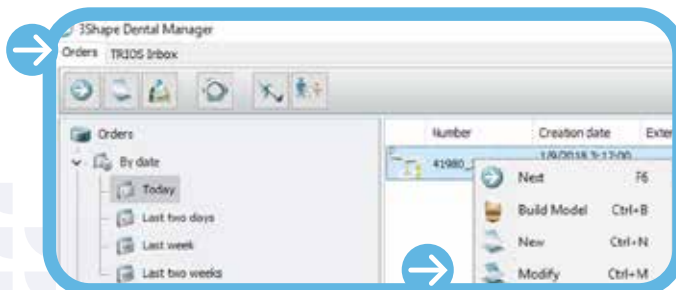
1. Open the 'TRIOS Inbox' tab, right click on the applicable case and select "Accept"



2. Select "Accept" for the following message in order to move the case into the 'Orders' tab and start order creation



3. Once the case is in the 'Orders' tab, right click on the case and select "Modify"

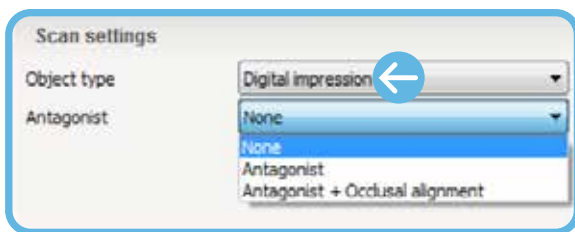


Customized Abutment Order Creation in 3Shape

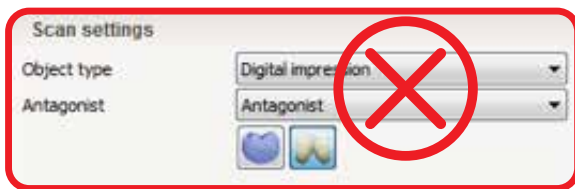
IMPORTANT: Prior to modifying the order and selecting the correct kit, select "3D Preview" to view the scan and determine the implant type; TSV Implant connection is indicated by three (3) grooves on the occlusal portion of the screw.



1. In the 'Scan settings' section of the menu, for 'Object type' select "Digital impression". If antagonist is available, under 'Antagonist', select applicable options



NOTE: "gingival scan" option is selected by default; this option should always be unselected when doing an IOS Impression case.



Incorrect

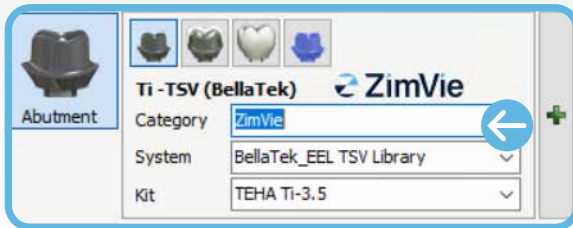


Correct

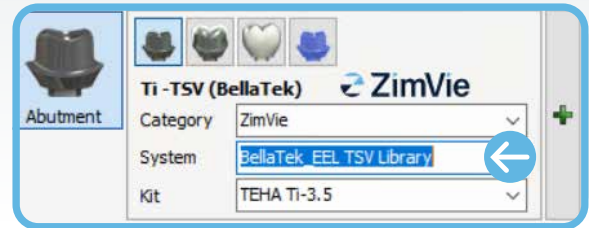
Intra-Oral Scanner Impression (TRIOS)

2. Select the "Abutment" icon in the menu (customized abutment is selected by default)
3. Abutment Order Settings

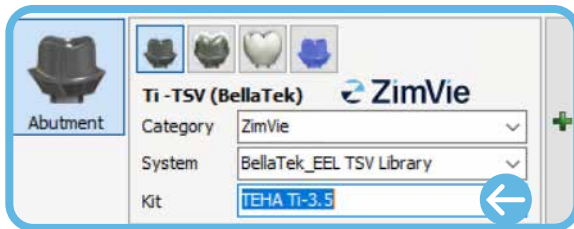
a. For 'Category', select "ZimVie TSV"



b. For 'System', select "ZimVie TSV EHA"

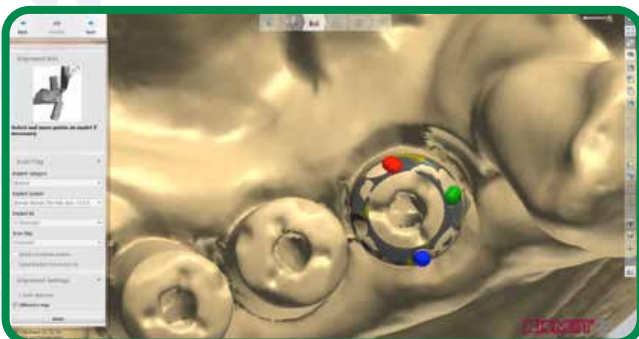


- b. For 'Kit', select the correct Encode Healing Abutment catalog code based on the code scheme. If necessary, measure the Emergence Profile to the correct diameter. Refer to ZBINST0013 for TSV Encode Code Scheme Matrix

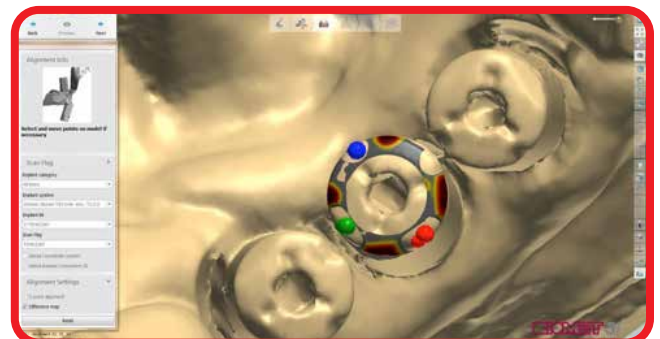


4. For cases requiring a 3D-printed model, click on the "Model" icon in menu
5. Once order has been modified click "Next" to begin alignment process
6. Start the alignment process
 - a. To align an abutment click on "Alignment setting"
 - b. Select box for "Three point alignment"
 - c. In the scanned EHA, select three (3) dots/positions on the codes
 - d. In the virtual mode, select and position three (3) dots in the same location as in the step above
 - e. The result of the alignment is displayed on the screen
7. Select "Difference map" or "2D Cross" to confirm accuracy of alignment:

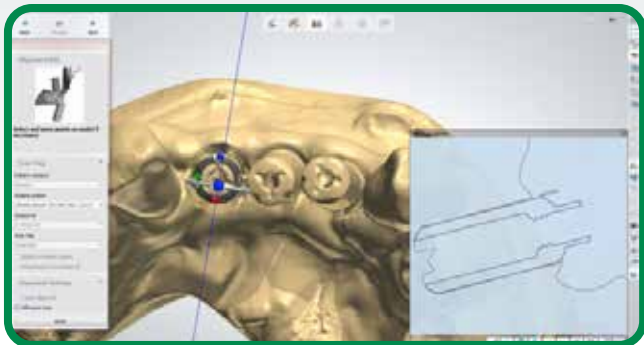
Example of Difference Map - Successful Alignment:



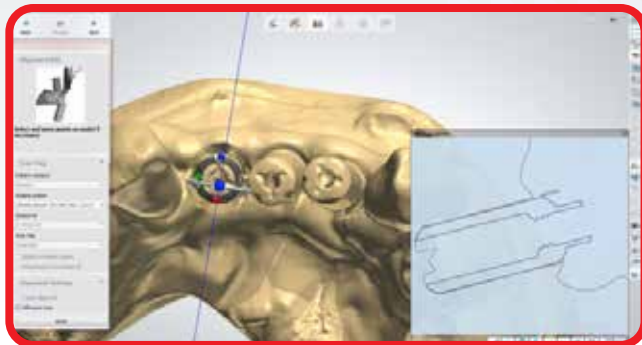
Example of Difference Map - Unsuccessful Alignment:



Example of 2D Cross - Successful Alignment:



Example of 2D Cross - Unsuccessful Alignment:

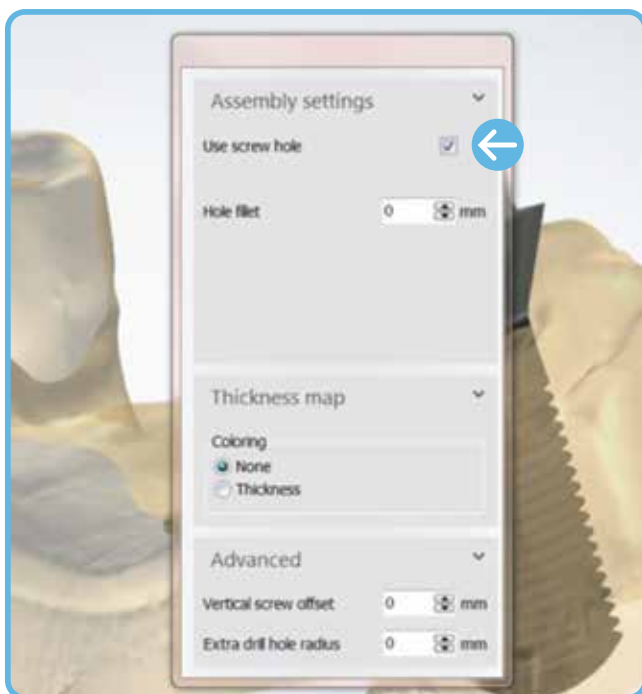


8. Complete the creation of the order

Abutment Design

1. Proceed with standard abutment design

NOTE: If a Zirconia abutment is being designed, "Use screw hole" must be selected at all times.



NOTE: For cases requiring a model, please refer to 3Shape Modelbuilder instructions.

The 'Analog to Model Spacing' value defaults to "0.020 mm". If a tighter or looser fit of the model analog is required, then adjust the 'Analog to Model Spacing' value. The 'Protect Analog' option defaults to "True". The 'Protect Analog Distance' value defaults to "1.000 mm" and can be adjusted as desired.

2. Click "Next"

Submit Case Through Dental Manager

1. Send to manufacturer from your outbox to ZimVie Dental inbox

For more information, visit [ZimVie.com](https://www.zimvie.com)

ZimVie Dental
4555 Riverside Drive
Palm Beach Gardens, FL 33410
1-561-776-6700



Unless otherwise indicated, as referenced herein, all trademarks and intellectual property rights are the property of ZimVie Inc. or an affiliate; and all products are manufactured by one or more of the dental subsidiaries of ZimVie Inc. (Biomet 3i, LLC, Zimmer Dental, Inc., etc.) and marketed and distributed by ZimVie Dental and its authorized marketing partners. Trios is a registered trademark of and manufactured by 3Shape A/S. For additional product information, please refer to the individual product labeling or instructions for use. Product clearance and availability may be limited to certain countries regions. This material is intended for clinicians only and does not comprise medical advice or recommendations. Distribution to any other recipient is prohibited. This material may not be copied or reprinted without the express written consent of ZimVie. ZVINST0213 REV A 02/24 ©2024 ZimVie. All rights reserved.

